

INSIDE BUSINESS

We are hoping that the hard line taken by the international community ... will bring about change quickly

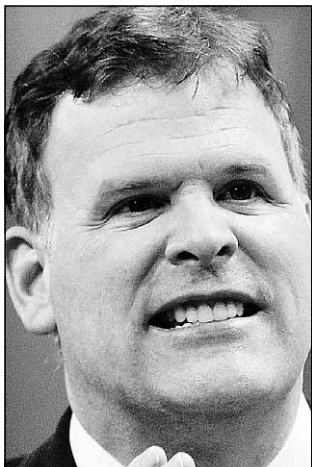
— HOUSE LEADER JOHN BAIRD ON SANCTIONS IMPOSED AGAINST LIBYA

CHECK YOUR STOCKS QUOTES ONLINE

CALGARYHERALD.com

CLICK ON CALGARY BUSINESS

NEWS MAKERS



John Baird

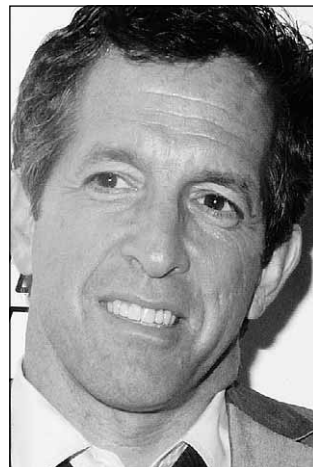
Canada says Libya sanctions won't affect firms

The sanctions that Canada has imposed on Libya do not affect the commercial operations of firms such as engineering company SNC-Lavalin Group Inc., government House leader John Baird said on Monday.

Baird also said Ottawa had blocked unspecified financial dealings that the Libyan government had planned to carry out in Canada. He declined to give further details. Canada announced late on Sunday that it would "impose an asset freeze on, and a prohibition of financial transactions with the government of Libya, its institutions and agencies, including the Libyan Central Bank."

SNC-Lavalin and oil firm Suncor Energy Inc. both have operations in Libya. Baird said the sanctions would not stop the companies from doing business there. "This doesn't eliminate commercial activities," he said.

"We are hoping that the hard line taken by the international community ... will bring about change quickly."



Kenneth Cole

Kenneth Cole takes reins as CEO departs

Designer Kenneth Cole surprised investors by taking the reins of his company on an interim basis and ending CEO Jill Granoff's nearly three-year run.

The clothing and footwear design house also forecast a first-quarter loss on costs related to store closures.

Shares of New York-based Kenneth Cole Productions Inc., founded by the designer in 1982, fell as much as 13 per cent to \$12.23 Monday on the New York Stock Exchange.

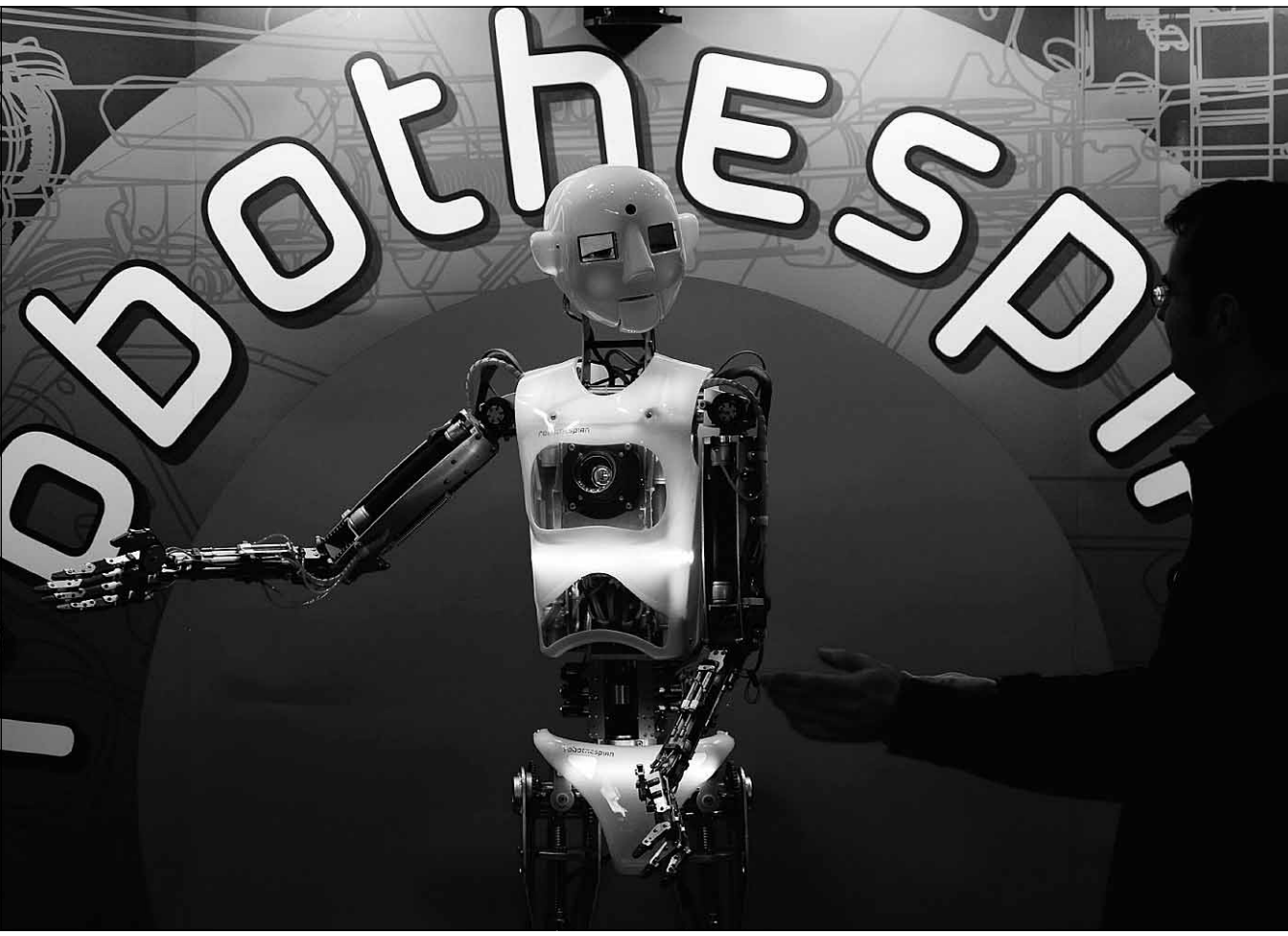
On a conference call, Cole indicated that former company president and industry veteran Paul Blum might get the top job.

Blum, who spent 15 years with the company before leaving to become CEO of jewelry company David Yurman, will return to Kenneth Cole Productions as a vice-chairman.

Granoff, who had been CEO since May 2008, presided over the closing of eight full-priced stores in 2010 and seven in the first quarter of fiscal 2011.

INTRODUCING ROBOTHESPIAN

A man demonstrates a humanoid robot named RoboThespian, created to educate, communicate, interact and entertain, in preparation Monday for CeBIT, the world's biggest IT event, opening today in Hannover, Germany.



Johannes Eisele, AFP/Getty Images

City architect tasked with war exhibit



DAVID PARKER
AROUND TOWN

Parks Canada is to build an impressive exhibit on the history of First World War internments in Canada adjacent to the Cave and Basin National Historic Site in Banff to tell the story of the 24 camps across the country that operated between 1914 and 1920.

The opportunity to design the building was won by Calgary's Riddell Kurczaba Architecture, and associate architect Peter Schulz was privileged to be offered the challenge to design a structure he says had to be humble, subtle and respectful.

Steve Malins, manager of the Cave and Basin and principal project lead for Parks Canada, says his mandate is to tell the nation the story of what happened in those years. He is conscious of how it may cause people concern, many of whom will be surprised that the camps were even built.

There is little evidence of the camps today, but during the First World War, hundreds of people who had come to this country for a better future had their dreams shattered when immigrants from specific countries were interned for the duration of the war.

In Banff they were kept under canvas behind barbed wire during the summer at Castle Mountain to work on the building of roads and bridges, and in the winter moved to wooden sheds on a site along Sundance Trail, above the town of Banff.

Directly across and above that site is where Schulz has designed a 100

square metre, self-guided educational exhibit space.

He featured a slanted roof that points toward Cascade Mountain with the high point above a large window that offers views down to the original campsite. It is set at an angle to "flow through" canopies at the entrance and exit. Inside, designed in collaboration with Toronto-based Reich and Petch exhibit designers, visitors will be met by a wall of graphics explaining how Canada got involved. Beyond are exhibits that will include a central tower of photographs and graphic information, audio and video explanations, a life-size model of a typical bunk sleeping area and a model of one of the original buildings by the window looking over to where they were located.

The stark interior will have white walls and use reclaimed wood planking on the floor. The exterior will be covered in vertical strips of a new low-maintenance thermo wood patterned to look like pine used in building the camp structures. The top portion of the new building will be clad with long-lasting matte-finished zinc panels.

The exhibit may cause visitors to want to reflect on how people were treated, so a bench site is being constructed beyond the exit area where people can sit quietly and contemplate this period of our history.

To be open free of charge during the summer months, Malins says Parks Canada has worked closely with the Canadian First World War Internment Recognition Fund, which represents the different cultural groups affected by our Great War internment policies. Other exhibits will be opened in Halifax and Kingston about

their local camps, but the building west of the Cave and Basin is the largest internment exhibit telling the national story.

Tom Tait, publisher of Galleries West, tells me he was delighted to find that on a Qantas flight from Los Angeles to Melbourne, Australia, he was served a bottle of Nanton water.

A business-focused mission is heading for Beijing and Shanghai in May led by Calgary Economic Development (CED) in conjunction with Mayor Naheed Nenshi, Tourism Calgary and the Calgary Airport Authority.

Focused on the energy and financial sectors, organizer Paul Paynter, CED's business development manager for energy, says the mission will be of particular interest to companies with export experience who are already operating in China or those looking to venture into Alberta's second largest trading partner.

Bill Partridge is sporting a new business card. Formerly addressed as executive vice-president of BOMA Calgary, the association's governance structure has been changed in line with best practices in the association world and Partridge has the new title of president and CSO (chief staff officer).

The BOMA Calgary volunteer board is chaired by Peter McCarty, director of property management Western Canada for GWL Realty Advisors.

DAVID PARKER APPEARS TUESDAY, THURSDAY AND FRIDAY. READ HIS COLUMNS ONLINE AT CALGARYHERALD.COM/BUSINESS. HE CAN BE REACHED AT 403-830-4622 OR E-MAIL INFO@DAVIDPARKER.CA.



Parks Canada plans to construct an exhibit in Banff to commemorate First World War internments in Canada.

Courtesy, Riddell Kurczaba Architecture

DEAL OF THE DAY

Blackstone to buy Centro malls for \$9.4B: sources

REUTERS
SYDNEY

Private equity firm Blackstone Group LP has struck a deal to buy nearly 600 U.S. strip malls and other properties from Australia's Centro Property Group for about \$9.4 billion, people with direct knowledge of the transaction said Monday.

Blackstone beat rival bidders that include Morgan Stanley Real Estate, which had teamed up with Starwood Capital Group and New York-based NRDC, according to a person who was not authorized to talk to the media and did not want to be identified.

Centro's properties are not considered among the best.

That may prove to be a big opportunity for Blackstone, said Benjamin Yang, an analyst with Keefe, Bruyette & Woods.

"To the extent that they are looking for some meaningful return, probably they're not going to get those type of returns getting the 'A' quality properties," Yang said.

"There's an opportunity to increase occupancy to something that's a little higher," he said. "And to the extent that these properties were under-managed, there might be an opportunity there to get rents back to market and maybe put in a better tenant base."

Centro is the latest example of Blackstone's rapidly expanding property empire, which includes the Hilton Hotels chain, a 7.6 per cent stake in U.S. regional mall owner General Growth Properties Inc. and expanding holdings in U.S. warehouse and distribution centres.

A sale would allow Centro to reduce its large debt load.

ETC.

Tablets to grow into \$35B market by 2012: J.P. Morgan

REUTERS

J.P. Morgan Securities expects tablets to evolve into a \$35-billion market by 2012, eating into the share of PCs, and competition to drive down premium prices.

The brokerage, which nudged up its forecast for tablet unit shipment and revenue, sees steep adoption rate and increasing number of available devices driving tablet market growth.

It sees tablet market growth spurred by improved operating system platforms and penetration of enterprise and education customer verticals.

"We expect tablets to have an increasingly negative impact on PC shipments," analyst Mark Moskowitz said. "More than 35 per cent of tablets sold in 2012 will be cannibalistic, particu-

larly as it relates to netbooks and notebooks," he said.

J.P. Morgan raised its 2011 tablet revenue estimates to \$26.1 billion from \$24.9 billion and 2012 estimates to \$35.2 billion from \$34.1 billion.

It expects 2011 unit shipments of 47.9 million, up from its prior view of 46.1 million. For 2012 it sees unit shipments of 79.6 million, up from its prior view of 78.2 million.

The brokerage expects the tablet market to get more crowded in the third and fourth quarters of 2011 and sees premium pricing enjoyed by Apple Inc.'s iPad to then diminish.

Separately, the brokerage cut its rating on Seagate Technology to "underweight" from "neutral" citing potential market share loss in enterprise drives in 2011 and 2012.

THE CALGARY 55

Calgary-based companies trading on the TSX

Oil and Gas

Company	Close	NtChg
Advantage	7.61	+0.04
ARC Res	28.40	+1.19
Athabasca Oil	16.50	+0.26
Baytex Eny	55.85	+0.75
Birchcliff Eny	11.23	-0.03
Bonavista Eny	30.67	+0.07
Cdn Oil Snds	30.05	+0.20
Cdn Nat. Res.	48.93	+0.58
Celtic Expl.	22.00	-0.05
Crescent Pt.	46.98	+1.00
Crew Energy	19.18	-0.22
Cenovus Eny.	37.75	+0.20
Daylight Eny	10.85	+0.13
EnCana Corp.	31.58	-0.06
Enerplus	31.72	+0.67
Gran Tierra	9.04	+0.18
Husky Energy	29.97	+0.37
Imperial Oil	50.59	+0.39
NAL Energy	14.52	+0.36
Nexen	26.51	+0.70
Niko Res	82.99	+0.39
Nu Vista Eny	10.02	+0.19
Pace	8.96	+0.12
Pengrowth	12.50	+0.02
Penn West	28.09	+0.12
Petrobank	24.99	+0.32
Perpetual Eny	4.33	+0.18
Peyto	20.05	+0.82
Progress Eny	12.92	+0.11
Suncor	45.66	+0.76
Talisman	24.11	+0.08
Vermilion	51.05	-0.08

Industrials

Company	Close	NtChg
Agrium	92.12	-0.57
AltaGas	24.72	+0.14
ATCO Ltd.	57.96	+0.65
Big Rock	16.50	-0.20
Boardwalk	45.69	+0.18
CP Rail	65.94	+0.42
Enbridge	58.05	+0.30
Ensign	16.64	+0.07
Forzani	17.43	-0.02
Inter Pipe	15.10	+0.11
Keyera Corp.	37.78	+0.78
Mullen Group	20.71	-0.33
Pason	14.91	+0.19
Pembina	22.06	+0.20
Precision Drill	11.45	+0.06
Superior Plus	11.24	+0.11
Shaw Com. B	20.69	-0.02
TransAlta	20.55	+0.13
TransCanada	39.04	+0.55
Trican Well	22.64	-0.12
Trinidad	8.19	+0.17
Veresen Inc.	13.02	-0.03
WestJet	15.05	+0.24

POSITIONS IN THE CALGARY 55 ARE DETERMINED PRIMARILY BY MARKET CAPITALIZATION. THE LISTINGS ARE REVIEWED ANNUALLY AND CATEGORIES ARE SUBJECT TO CHANGE.

THE INCOME ALTERNATIVE

CAREVEST MORTGAGE INVESTMENT CORPORATIONS

returns up to **9%+**

Real Estate Secured Investments
Registered Fund Eligible
Monthly Income or Compounding
Geographically Diverse

CareVest For information please call:
403-509-0115
1-877-509-0115
www.carevest.com

This advertisement does not constitute a solicitation or an offer to purchase securities, which is being made under an Offering Memorandum available from our offices. There are risks associated with this investment and mortgage investments. Investment in our MIC's is not guaranteed or secured against company assets and there is no assurance that the historical yield shown will be representative of the yields that can or will be obtained in the future.