

DEPARTMENT SPOTLIGHT: Spending Time In The National Parks With RKA's Architectural Studio

For the past year-and-a-half, RKA has had the privilege of working with Parks Canada and Public Works and Government Services Canada (PWGSC) on the design of a number of notable projects within Canada's storied national parks system. These assignments have included:



ROGERS PASS DISCOVERY CENTRE RENOVATIONS – GLACIER NATIONAL PARK

Having endured 27 long winters and the ravages of time, of freeze/thaw, and of gravity, the Rogers Pass Discovery Centre was ready for a long-due renovation. RKA was retained to conduct a code review and implement upgrades, remediate key architectural elements in disrepair, modernize the interiors and barrier-free access to current specification standards, and coordinate structural, mechanical and electrical rehabilitation to return the building to its past glory. Our design approach, led by Paul Ketchabaw (Project Manager) and Brook Melchin (Senior Architect), acknowledged sustainable best practices for the building systems, while respecting the history and context of the facility via the authenticity and "patina" in the expression of materials.



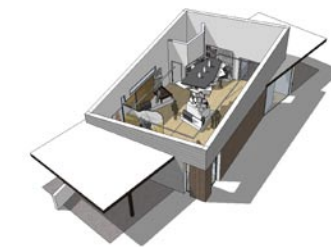
PALISADES STEWARDSHIP EDUCATION CENTRE, ACCOMMODATION BUILDING – JASPER NATIONAL PARK

The new 314 m² Accommodation Building in Jasper National Park was built to support the Palisades Stewardship Education Centre, an educational outreach program of Parks Canada. RKA's architectural team, directed by Claudia Nuwenhof (VP of Architecture) and Peter Schulz (Designer), was sensitive to the heritage and sustainability considerations required by the project.

RKA's design of the 1-storey building lends itself wonderfully to the park setting, with its natural wood and stone exterior features; substantial windows to let in copious daylight; and a grand porch to facilitate enjoyment of the scenery. The look of the building stands true amongst the older structures, but with its numerous sustainable elements, it also stands out.



FIRST WORLD WAR INTERNMENT EXHIBIT BUILDING – BANFF NATIONAL PARK



The First World War Internment Exhibit in Banff National Park is part of a Parks Canada initiative to educate the public on WWI internment camps across Canada. Currently in detailed design, the 100 m² new building will be built adjacent to the Cave & Basin National Historic Site. Functionally and aesthetically, it is designed to enhance and complement the

emotional heft and seriousness of this particular exhibit experience. In January 2011, the plans for the Internment Exhibit Building were approved by the Parks Canada Advisory Development Board without conditions or recommendations being imposed on them, a remarkable achievement by Peter Schulz (Designer) and the RKA design team.

With support from RKA's Interior Design and 3D Visualization groups, our Architectural Studio ensured that our approach to each project respected the beautiful Rocky Mountain backdrop, the historical import of the site, and Parks Canada's desire to elevate the end-user experience.

We are proud of our contributions to the ongoing legacy of our National Parks, and we thank Parks Canada and PWGSC for the opportunities to work with them on these important endeavors!

LIFE IN DESIGN: Our People, Community and Achievements



Building Code Awareness

On Wednesday, March 23, from 2:00pm to 3:30pm, RKA's resident Fire & Life Safety expert, Mr. Sandy Mackenzie, will be presenting a seminar at this year's BUILDDEX conference in Edmonton. This session, titled "The Building and Fire Codes and How They Impact Your Building", offers an educational opportunity for building owners, managers, and operators

regarding the existing Building and Fire Codes and foreseeable revisions, and includes an outline of code requirements that need to be satisfied on a regular basis in order to achieve a safe, secure and code-compliant building. For more information on seminars and registration, visit www.buildexedmonton.com.

